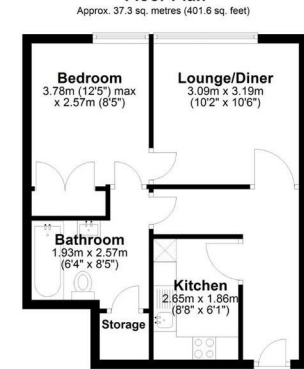


Horton & Senate



2309 The Cube 197 Wharfside Street, Birmingham, B1 1PQ

£950

- 23rd Floor Apartment
- Lounge/Diner
- Kitchen with Appliances
- Furnished
- 1 Double Bedroom
- Electric Heating
- Double Glazed
- Close to Grand Central Station
- Bathroom with Shower
- Available Now

49a Station Road, Knowle, Solihull, West Midlands, B93 0HN
01564 773200

info@senateproperty.co.uk

2309 The Cube 197 Wharfside Street, Birmingham B1 1PQ

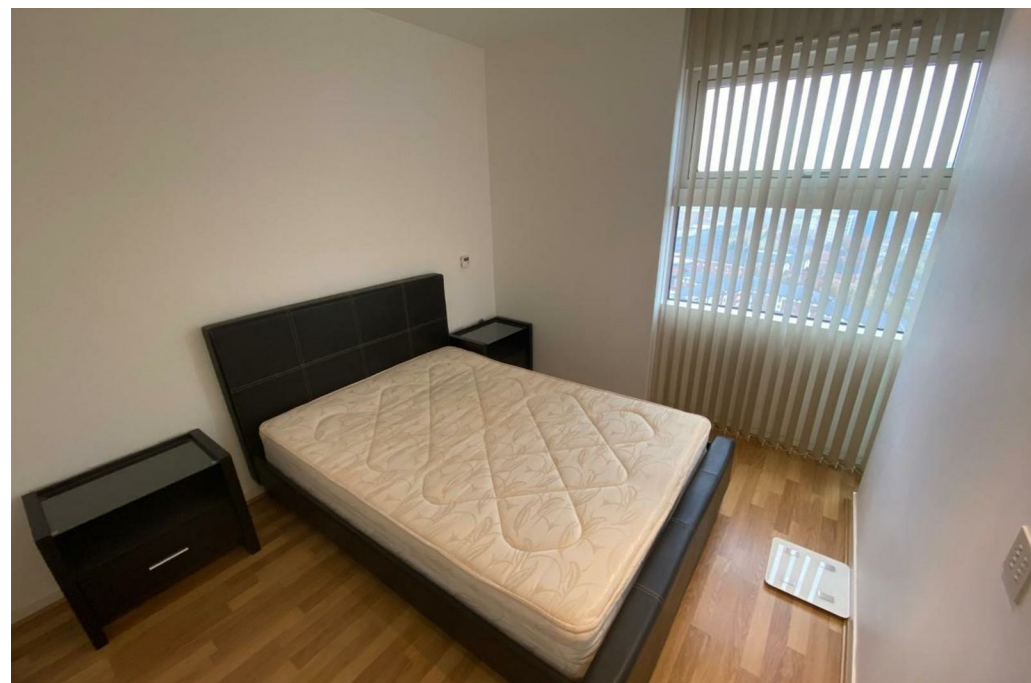
Horton & Senate are pleased to offer this twenty third floor studio apartment in the much sought after Cube development. Located close to the local amenities at Mailbox and with Grand Central Station nearby. Benefiting from double glazing and comprising of secure communal entrance, communal lift to all floors, entrance hallway, lounge/diner with views across Birmingham, fitted kitchen with integrated appliances, double bedroom with fitted double wardrobe and access into bathroom, bathroom with shower over bath, wooden flooring and ceramic tiled floor throughout.

Available Early June

Heating usage invoiced six monthly via managing agents in addition to the rent advertised

1 1 1 C

Council Tax Band:

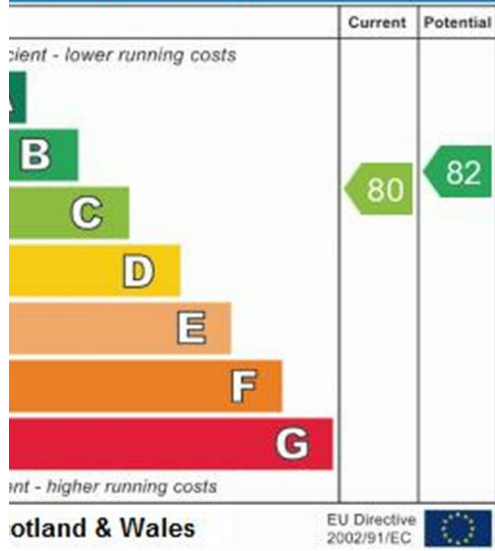




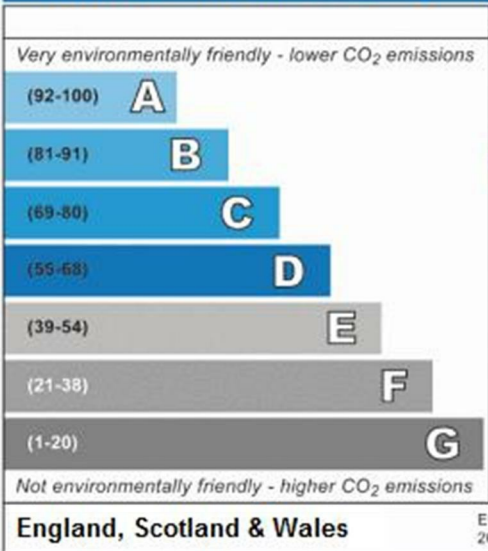




Efficiency Rating

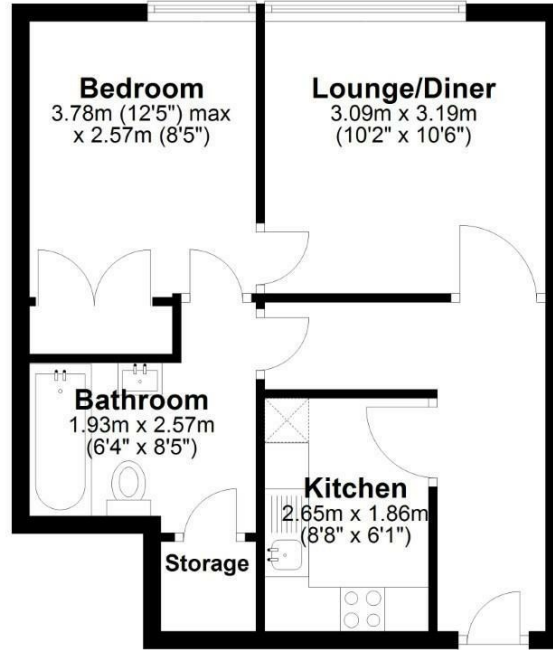


Environmental Impact (CO₂) Rating

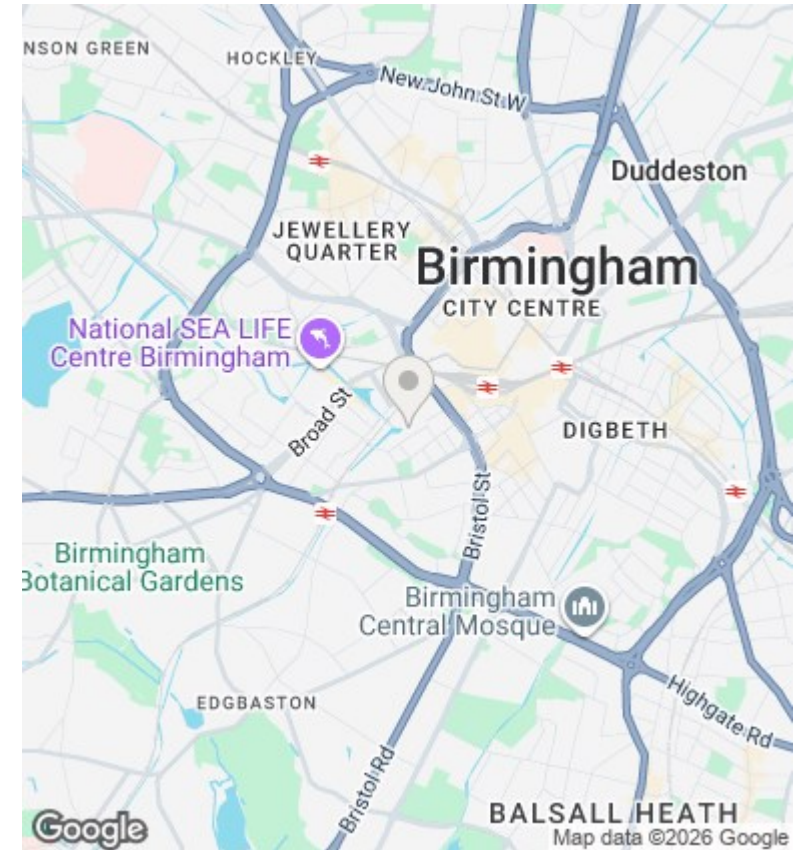


Floor Plan

Approx. 37.3 sq. metres (401.6 sq. feet)



Total area: approx. 37.3 sq. metres (401.6 sq. feet)



Directions

Viewings

Viewings by arrangement only. Call 01564 773200 to make an appointment.

Council Tax Band

B

Energy Efficiency Rating		Current	Potential
<i>Very energy efficient - lower running costs</i>			
(92 plus) A			
(81-91) B			
(69-80) C		80	82
(55-68) D			
(39-54) E			
(21-38) F			
(1-20) G			
<i>Not energy efficient - higher running costs</i>			
England & Wales		EU Directive 2002/91/EC	